

# T-500-SS

Height: 16.75" (42.5cm)  
Width: 9.625" (22.8cm)  
Depth: 5.5" (13.9cm)  
Weight: 27.6 lbs.



**NIGHTSCAPING®**  
1705 E. Colton Avenue  
Redlands, California 92374  
Tel: (909) 794-2121  
Fax: (909) 794-7292  
Help Line: (800) 544-4840  
E-mail: [info@nightscaping.com](mailto:info@nightscaping.com)  
<http://www.nightscaping.com>

Nightscaping® Powercenters™ offer you the absolute latest in transformer technology and provide you with real-life solutions to multiple outdoor lighting concerns. Use our UL 1838 approved SS series Powercenters™ - backed by a LIFETIME WARRANTY - to guarantee effective and efficient transformer operation for the life of your lighting systems.

**Material:** **Case:** 22-gauge stainless steel uni-body construction  
**Power cord:** 3-foot-3 conductor insulated power cord and molded plug connector

**VA Rating:** 500W(VA)

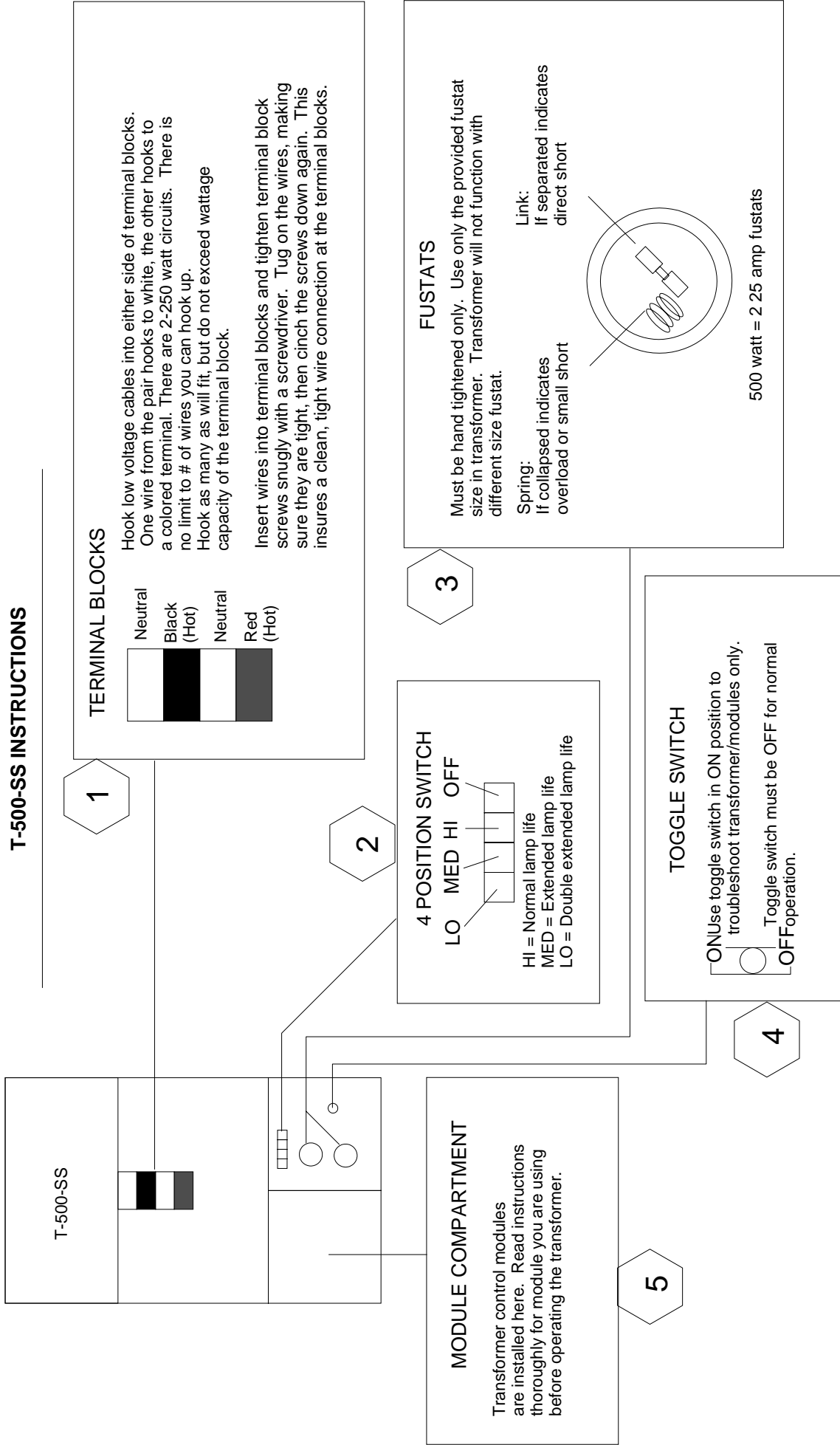
**Fustat:** 2 - 25AMP

**Control Options:** Analog Timer (T-SS-AT), Digital Timer (T-SS-DT), Dimmer (T-SS-V600), Photocell (T-SS-PC), Sprinkler Control (T-SS-SC), X10 (T-SS-X0), 12V Islander Relay (T-SS-12V)

\* Photocell and timer combinations also available (T-SS-AP), (T-SS-DP).

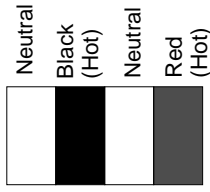


# T-500-SS INSTRUCTIONS



T-500-SS

## 1 TERMINAL BLOCKS



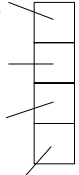
Hook low voltage cables into either side of terminal blocks. One wire from the pair hooks to white, the other hooks to a colored terminal. There are 2-250 watt circuits. There is no limit to # of wires you can hook up. Hook as many as will fit, but do not exceed wattage capacity of the terminal block.

Insert wires into terminal blocks and tighten terminal block screws snugly with a screwdriver. Tug on the wires, making sure they are tight, then cinch the screws down again. This insures a clean, tight wire connection at the terminal blocks.

2

## 4 POSITION SWITCH

LO MED HI OFF



HI = Normal lamp life  
 MED = Extended lamp life  
 LO = Double extended lamp life

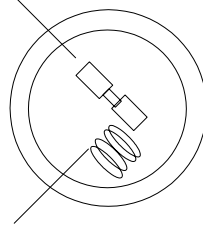
3

## FUSTATS

Must be hand tightened only. Use only the provided fustat size in transformer. Transformer will not function with different size fustat.

Spring: If collapsed indicates overload or small short

Link: If separated indicates direct short



500 watt = 2 25 amp fustats

## TOGGLE SWITCH

ON Use toggle switch in ON position to troubleshoot transformer/modules only.  
 OFF Toggle switch must be OFF for normal operation.

4

## MODULE COMPARTMENT

Transformer control modules are installed here. Read instructions thoroughly for module you are using before operating the transformer.

5