

TOP VIEW

**MATERIALS:**

COPPER, STAINLESS STEEL, OR BRASS

**LAMP:**

LOx1419 (STANDARD)  
 5 WATTS, T-5 XENON WEDGE BASE  
 AVAILABLE IN 11.5 AND 18 WATT XENONS

**FINISH:**

WM-0878CU NATURAL COPPER  
 WM-0878CU-V COPPER VERDE (ADDITIONAL CHARGE)  
 WM-0878CU -1 (BLACK), -7 (WEATHERED IRON)  
 -2 (NATIVE GREEN), -3 (TAN), -4 (BRONZE),  
 -8 (SANDSTONE), -9 (EARTHTONE), -W (WHITE),  
 -AV (ANTIQUÉ VERDE), -VP (VERDE POWDER)  
 (OPTIONAL POWDER COAT: ADDITIONAL CHARGE)

**SOCKET:**

NON-CORRODING NORYL  
 WEDGE BASE

**MOUNTING:**

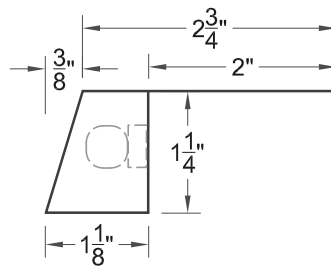
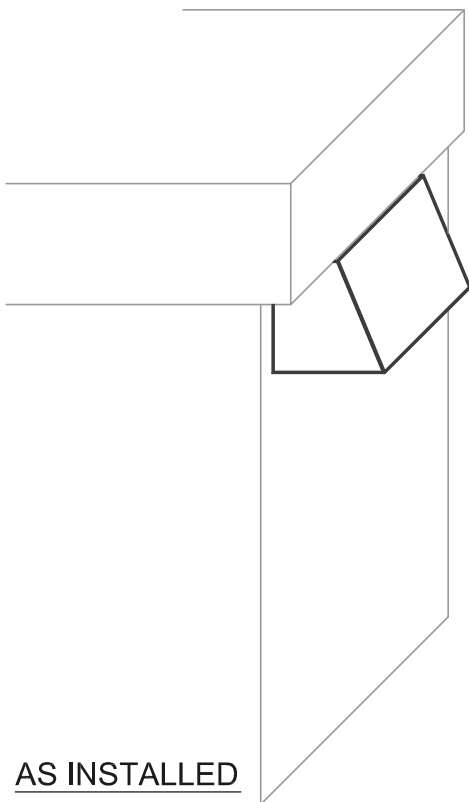
FIXTURE WING FITS BETWEEN PIECES OF MASON  
 TO BE GROUTED INTO PLACE  
 (MOST CONVENIENT WHEN INSTALLED WITH HARDSCAPE)

**LAMP REPLACEMENT:**

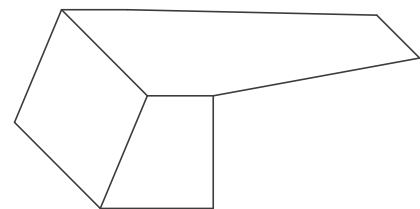
REACH UNDER FIXTURE, PULL SOCKET OUT OF CLIP  
 PULL OUT OLD LAMP, REPLACE WITH NEW LAMP  
 (LEAVE ENOUGH LEAD WIRE LENGTH DURING INSTALL  
 TO REMOVE SOCKET FROM CLIP)

**LEAD WIRE:**

5' LEAD WIRE (STANDARD)  
 AVAILABLE IN LONGER LENGTHS WHEN SPECIFIED



SIDE VIEW



SIDE VIEW

MASONLITER WM-0878

*Nightscaping*

SIZE	DRAWN BY	CLASSIFICATION	DATE
A	REBEKAH PAULLUS	SPECIALTY LIGHTING	MAY 5, 2008