

MATERIALS

PHOSPHATIZED STEEL
(ALSO AVAILABLE IN COPPER)

LAMP

LO93 (STANDARD)
12.3 WATTS / SINGLE CONTACT BAYONET

SOCKET:

NON-CORRODING NORYL
SINGLE-CONTACT BAYONET

MOUNTING:

SET STEM IN A MINIMUM
OF 8" CONCRETE
(OPTIONAL MOUNTING PLATE)

LENS:

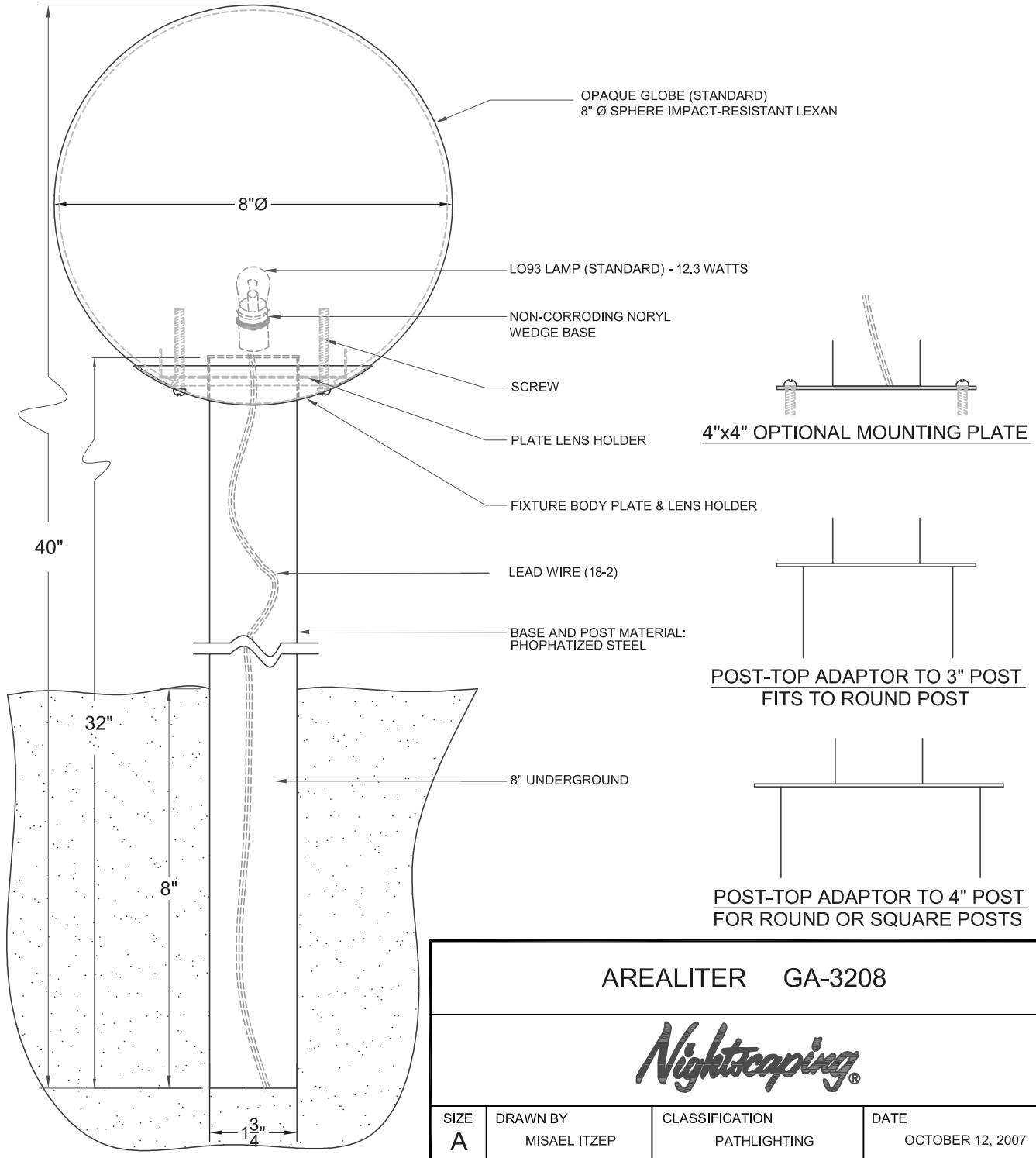
OPAQUE GLOBE (STANDARD)
SPHERE: 8" DIA. IMPACT-
RESISTANT LEXAN

FINISH:

GA-3208 -1 (BLACK), -7 (WEATHERED IRON)
(STANDARD POLYESTER POWDER COAT)
GA-3208 -2 (NATIVE GREEN), -3 (TAN), -4 (BRONZE),
-8 (SANDSTONE), -9 (EARTHTONE), -W (WHITE),
-AV (ANTIQUER VERDE), -VP (VERDE POWDER)
(OPTIONAL POLYESTER POWDER COAT:
ADDITIONAL CHARGE)
GA-3208CU NATURAL COPPER (ADDITIONAL CHARGE)
GA-3208CU-V COPPER VERDE (ADDITIONAL CHARGE)

LAMP REPLACEMENT:

UNDO 2 SCREWS AT BOTTOM OF FIXTURE, REMOVE BALL
PUSH IN LAMP, TURN COUNTER- CLOCKWISE, PULL OUT
PUSH IN NEW LAMP, TURN CLOCKWISE



AREALITER GA-3208

Nightscaping®

SIZE A	DRAWN BY MISAEEL ITZEP	CLASSIFICATION PATHLIGHTING	DATE OCTOBER 12, 2007
-----------	---------------------------	--------------------------------	--------------------------